

# Outdoor Challenge

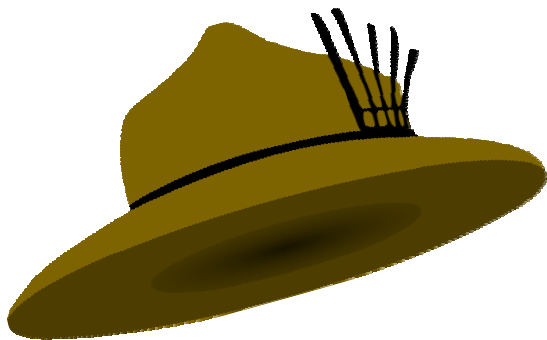


Plant a tree  
or flower

Part 2

*The aim in Nature study is to develop a realisation of God the Creator, and to infuse a sense of the beauty of Nature."*

*Sir Robert Baden-Powell*



# Index

## **ACTIVITIES & CRAFTS**

**Seeds**

**Growing Beans**

**Plants**

**Trees**

**Fruit**

**Fruit Faces**

**What lives among Trees and Flowers? The Butterfly**

## **GAMES**

## **VISITS & ACTIVITIES**



# Seeds

Seeds have different shapes, sizes and colours



Poppy



Rose



Geranium



Sunflower



Pumpkin



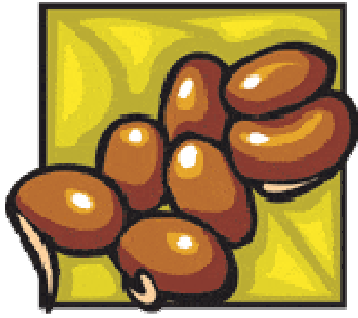
Chrysanthemum



Watermelon



Apple



# Growing Beans



*1. Fill the pot with soil*



*2. Make a hole in the soil with your finger. Sow the bean and cover it with soil again*

*3. Add Water*

*4. On a paper write down the date when you planted the bean. Stick the paper to the pot*



*5. Water it regularly and take care of it. Soon enough it will start sprouting out of the soil in the pot.*



*Put the plant next to a wall and on the wall attach a strip of paper. From time to time check the height of the plant and mark it on the paper. Like this you can see the progress of your plant*

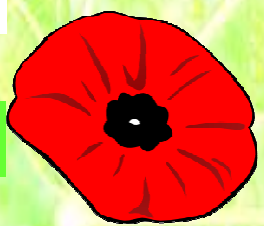
# Plants

There are two groups of plants:  
Flowering Plants  
Non-Flowering Plants

## Flowering Plants



Rose



Poppy



Sunflower



Geranium



Chrysanthemum



Daffodil

## Non-Flowering Plants

Grass



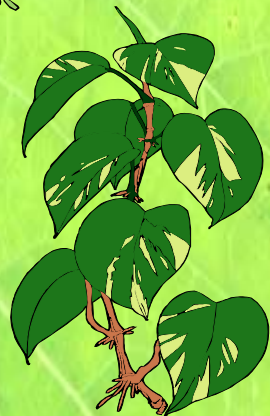
Seaweed

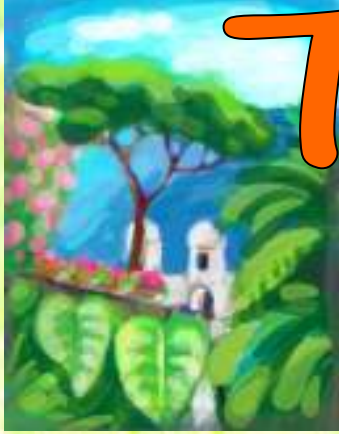
Mushroom



Fern

Ivy





# Trees

*There are three groups of trees:*

*Flowering Trees*

*Non-Flowering Trees*

*Fruit Bearing Trees*

*Flowering Trees*



*Hawthorne*

*Non-Flowering Trees*

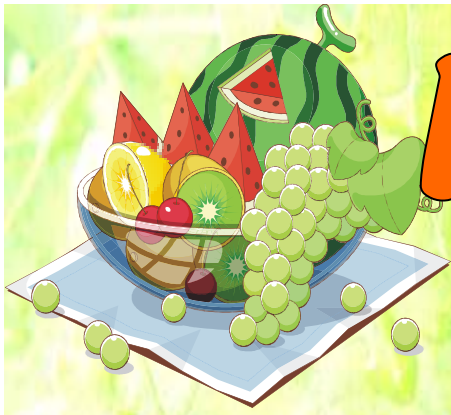
*Holm Oak*



*Fruit Bearing Trees*



*Citrus*



# Fruit

*Fruit come in all shapes, sizes and colours.  
Most of them have seeds which can be used  
planting again.*



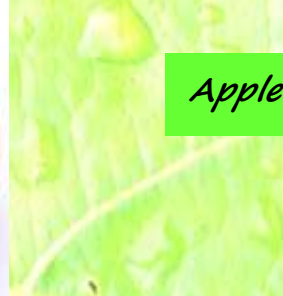
*Kiwi*



*Orange*



*Apricot*



*Apple*



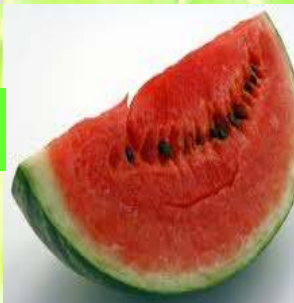
*Lemon*



*Cherry*



*Watermelon*



*Pear*



*Daffodil*



*Daffodil*



# Fruit Faces



*With the help of your BSL cut out the fruits of your choice and use them to build the face of a character of your choice.*



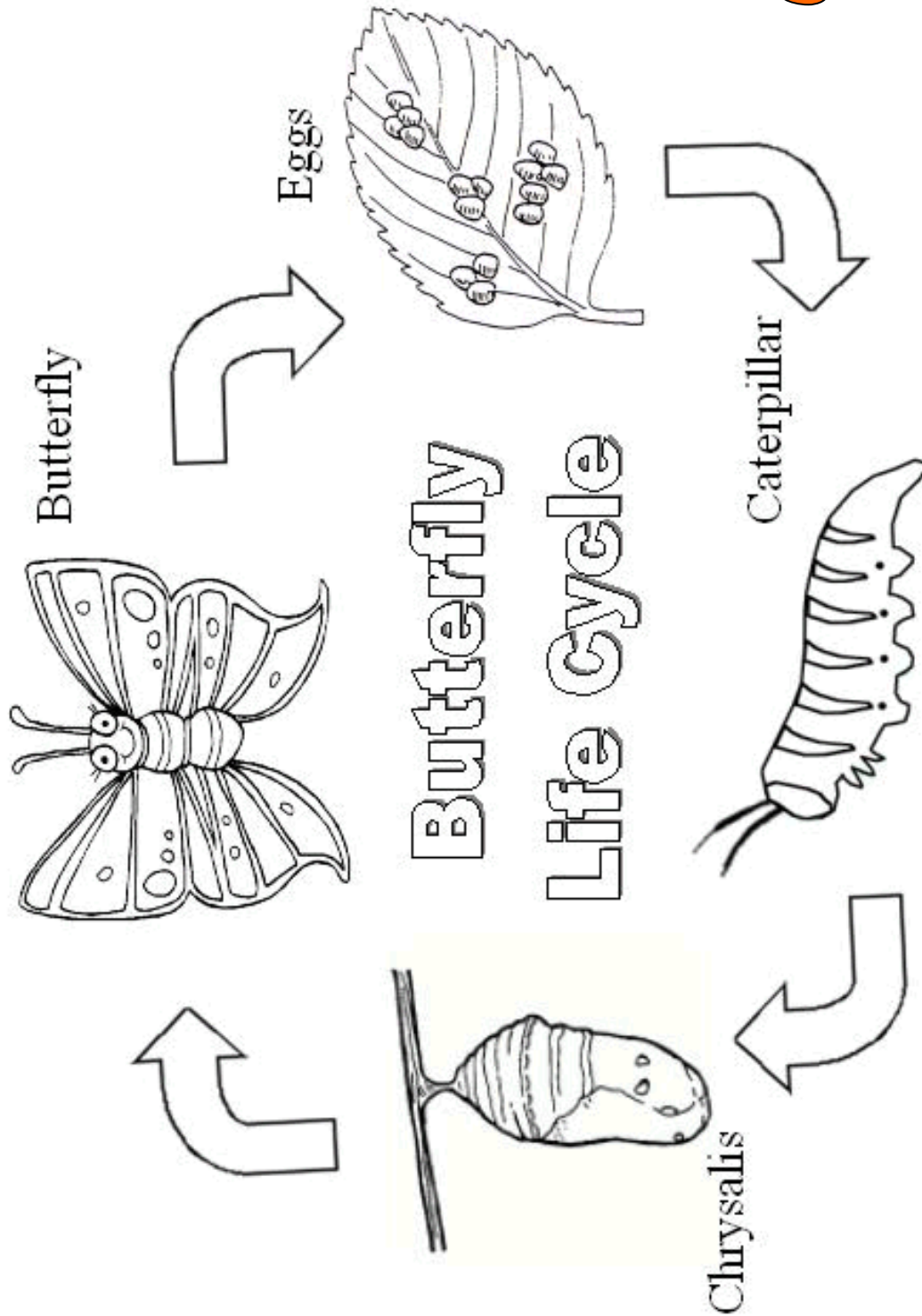
*Make sure you wear an apron to cover your clothes.*

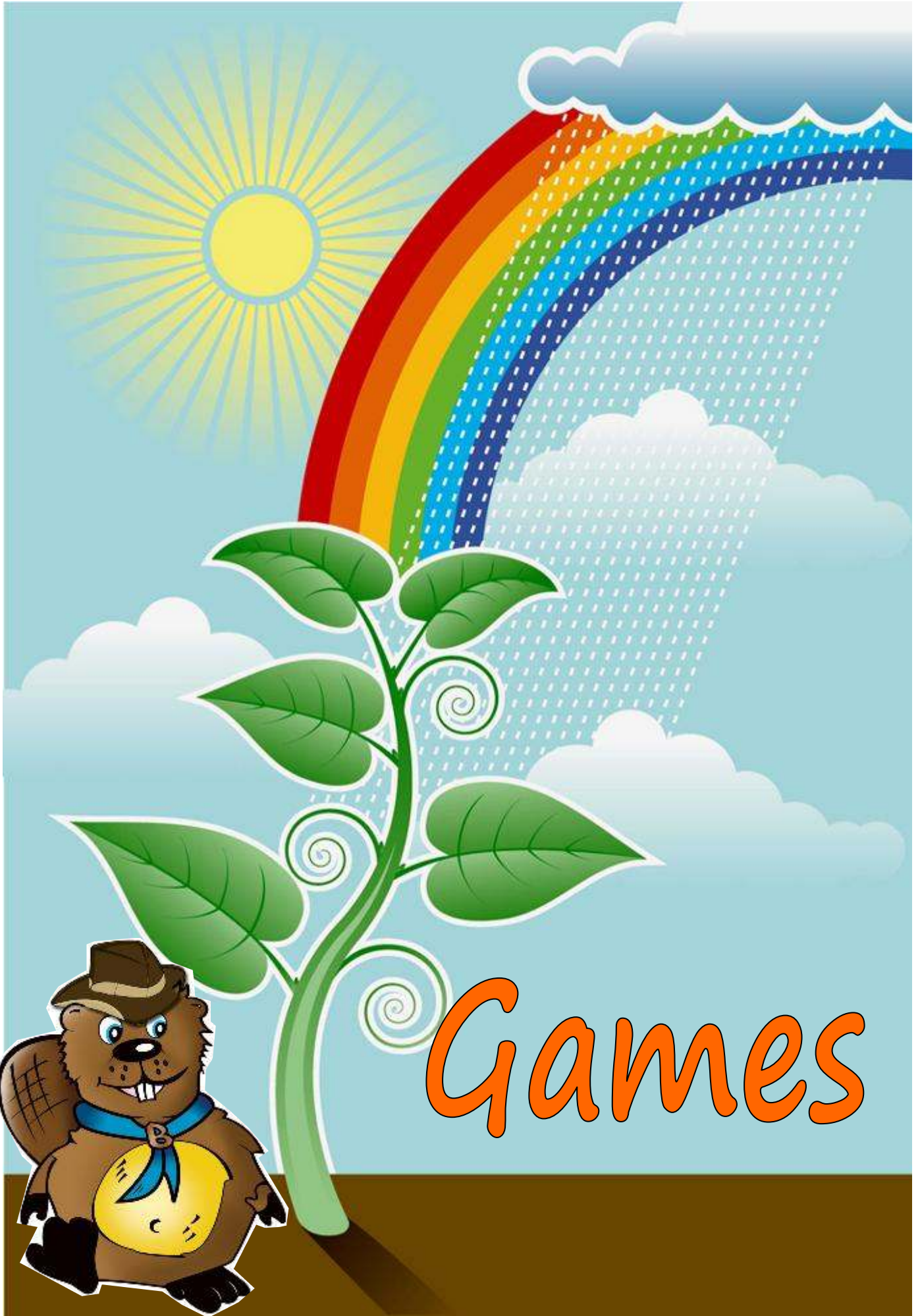
*Also put a table cloth on your table to protect it.*



# What lives among Trees and Flowers?

## The Butterfly





## *ROB THE SHOP*

Divide the Beavers into teams and place them at an equal distance from a circle at the end of the meeting room. In the circle place a collection of laminated pictures of all the items that are needed to plant a tree or a flower properly including also some other items which have nothing to do with it at all. Ensure that there are enough sets of all the pictures to cover all the teams you have i.e. 3 teams - 3 sets of pictures. At the leader's signal beavers take a turn each to run to the circle and collect the 'gardeners equipment' needed.

When the pictures in the circle have finished, have each team have a look at what they brought back. The team to have collected all the items needed wins.



Visits

# Visits & Activities

**Botanical Garden**

**Garden Nursery**

**Fruit Picking Activity**

**Manikata Rural Heritage Trail**